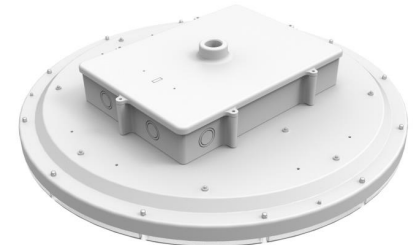




(HB-28L)



(HB-11L & HB-18L)

**Features**

- Frosted lens to reduce glare
- Instant on to full brightness
- Energy efficient
- Wide light distribution
- High efficacy up to 134 lumens per watt
- Light weight for easy installation
- Lower maintenance costs
- Available 3000K, 4000K, and 5000K color temperatures
- IP65 Rated for wet locations
- Operating temp -40°C - +60°C  
-40°F - +140°F
- Dimensions 21.6" x 21.6" x 6.5"
- LM79/80 reports and TM21 data available
- Input voltage 120-277V or 347-480V
- Workable Voltage at 90-305V or 347-528V

- DLC Premium 4.0 under Nuwave model number 52050, 52051
- NSF certified -Splash zone/Non-Food zone
- UL, RoHS and FCC certified
- 7 year warranty
- L70 >60,000 hours at 85°C
- 0-10 V DC dimming standard

**Applications**

- Offices
- Warehouses
- Storage areas
- Food processing plants
- Cold storage
- Convention centers
- Airports
- Healthcare facilities
- Workshops
- Manufacturing plants
- Stadiums

Ordering Information:

Ex. HB-18L-40K-UL-WG



Model  
**HB**

Lumen Package

- 11L** = 11,000 lm, 88W
- 18L** = 18,000 lm, 145W
- 28L** = 28,000 lm, 232W

CCT

- 30K** = 3000K
- 35K** = 3500K
- 40K** = 4000K
- 50K** = 5000K

Voltage

- UL** = 120-277V
- UH** = 347-480V

Options

- RA90** = High CRI Option (>90)
- OS** = Occupancy Sensor set
- CR** = Commissioning Remote (for OS)
- WG** = Wireguard
- CD** = 6' Cord
- PS1** = 120V Straight blade plug
- PS2** = 277V Straight blade plug
- PT1** = 120V Twist-Lock plug
- PT2** = 277V Twist-Lock plug
- PH** = Pendant Hook
- Y3** = Y-3 wired gripper

